

## COVID Safety Reminders

Now is a good time to remind everyone of the guidance for COVID exposures and testing. Please see the message below and if you have any questions, please feel free to contact Bernadine Claus, Dr. Vasquez or MaryBeth Goldstein

In most circumstances, asymptomatic HCP with higher-risk exposures do not require work restriction.

View the CDC guidance at the link below:

<https://www.cdc.gov/coronavirus/2019-ncov/hcp/guidance-risk-assesment-hcp.html>

Please remember self-monitoring for symptoms is key to reducing the spread of infection. If you are symptomatic, call Human Resources and your supervisor to report symptoms; HR will assist with arranging for PCR testing.

# MANDATORY MASKING

**for ALL employees,  
effective until Tuesday, July 11**



**Due to a recent COVID resurgence, we are re-implementing mandatory masking for ALL employees effective immediately for the next two weeks. After this two-week period, we will reevaluate to determine whether we can safely unmask again.**

### Please remember to:

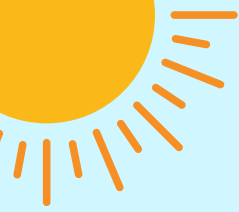
- ensure your mask fits well and covers your mouth AND nose
- disinfect your personal work stations and shared equipment throughout the day
- practice diligent hand hygiene
- test prior to coming to work *if you are feeling unwell or have had recent close contact with someone who tested positive for COVID*

**We are not asking our patients to mask at this time, unless they are here for a sick visit.**


We know it has been a long road these past few years, and unfortunately, these temporary bumps in the road are inevitable from time-to-time. We thank you for your cooperation and efforts to protect our patients, yourselves, and one another.

## HOLIDAY CLOSURE

All Whitney Young Health locations will be **CLOSED on Tuesday, July 4** in observance of Independence Day.



## Diversity, Equity & Awareness

SUNDAY	MONDAY	TUESDAY	WEDNESDAY	THURSDAY	FRIDAY	SATURDAY
		<i>*All Jewish and Muslim holidays start at sundown</i>				1
2	3 <u>Asalha Puja/ Dhamma Day.</u> Buddhist	4  <b>HAPPY 4TH OF JULY!</b>	5	6	7	8
9 <u>Martyrdom of the Bab</u> Bahá'í	10	11	12	13	14	15
16	17	18 <u>Al Hijra/ Muharram</u> *Muslim  <u>Nelson Mandela International Day</u>	19	20	21	22
23	24 <u>Pioneer Day</u> Mormon	25	26 <u>Tisha B'Av</u> *Jewish  <u>National Disability Independence Day</u>	27 <u>Ashura</u> *Muslim	28 <u>World Hepatitis Day.</u>	29
30	31					



### Monthly Observances:

- HEALTHY VISION MONTH
- PARKS & RECREATION MONTH
- NATIONAL MINORITY MENTAL HEALTH AWARENESS MONTH



June  
2023

New Hires



Welcome, New Staff!

Mikiya Orr	LPN
Morgan Moore	Medical Assistant
Sarah Engel	Substance Use Disorder Counselor
Yogitha Jagarlamudi	Healthcare Data Analyst
McKenzie Delgado	Specialty Health Home Care Coordinator
Adrianna Mollo	Specialty Health Home Care Coordinator
Katie Stair	Director of Program Development & Community Impact
Keith Bemis	Training Specialist

SAVE THE DATE

WHITNEY YOUNG HEALTH

2023 Staff Retreat  
Thursday, September 21st  
8:30 a.m. - 4:00 p.m.

Italian American Community Center  
257 Washington Ave Ext, Albany, NY 12205

A Day Filled With Fun, Networking, Educational  
Opportunities, Food & Raffles!

Fruit & Coffee Will Be Served In The Morning  
Buffet-Style Lunch



More  
Information  
To  
Come



Transportation Will Be Provided For  
Those Who Need It. Transportation will  
be provided from 920 Lark Drive only.



# Program Profile

## Behavioral Health

Whitney Young Health (WYH) is focused on continuing to offer an integrated healthcare model as a part of its behavioral health services. Every year millions of Americans struggle with mental health conditions. Mental health includes our emotional, psychological, and social well-being. It affects how one thinks, feels, and acts. It helps determine how one handles stress, relates to others, and makes decisions.

WYH provides behavioral health services for those struggling with interpersonal, mood, anxiety, and other problems associated with addiction and mental health conditions.

In addition to offering counseling and treatment services to behavioral health patients, WYH also believes in an integrated healthcare model. Often referred to as inter-professional health care-WYH addictions treatment program has an embedded primary care center on-site. Integrated care is an approach to treatment characterized by a high degree of collaboration and communication among healthcare professionals. What makes integrated health care unique is the sharing of information among team members related to patient care and the establishment of a comprehensive treatment plan to address the biological, psychological, and social needs of the patient.

WYH inter-professional health care team includes a diverse group of multi-disciplinary team members, including; physicians and nurse practitioners, nurses, licensed clinicians, social workers, addiction counselors, and other health professionals.

Through an Integrated Care Model and enhanced collaboration between health professionals, WYH Addictions Services provides “WHOLE” Person Care to patients and their families designed to improve overall well-being.

WYH’s addictions treatment program provides services at the Harry and Jeanette Weinberg Treatment Center. Addiction is a primary, progressive, chronic disease characterized by the misuse of alcohol and other substances; often resulting in drug-seeking behaviors and use that is compulsive and difficult to control despite harmful consequences.

WYH offers a robust continuum of outpatient services grounded in best practices and designed to foster recovery from addiction.

WYH offers addiction treatment services, medication assisted treatment (MAT), opioid treatment program, individual, group and family counseling, health home care coordination, peer services, and primary care. Read more about each of the services.

WYH inter-professional health care team includes a diverse group of multi-disciplinary team members, including; physicians and nurse practitioners, nurses, licensed clinicians, social workers, addiction counselors, and other health professionals.

Through an Integrated Care Model and enhanced collaboration between health professionals, WYH Addictions Services provides “WHOLE” Person Care to patients and their families designed to improve overall well-being.





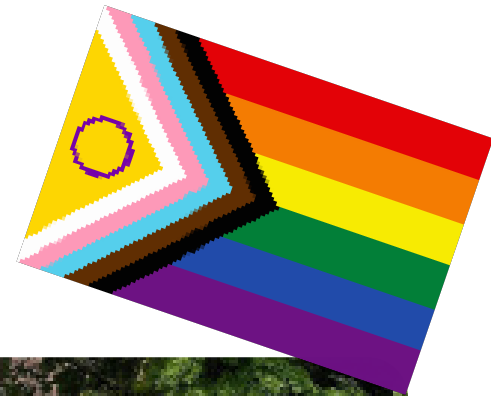


**TOP:** WYH staff, volunteers, friends and family get ready to march in the Capital Pride Parade on Sunday, June 11.

**LEFT & RIGHT** The Whitney On Wheels mobile unit was decorated by staff to show support during the Capital Pride Festival.

**BOTTOM:** Whitney Young Health executives and staff marched in the Capital Pride Parade on Sunday, June 11.





**Do you have something to share in the next issue of Whitney Wire?**

**The Marketing & Development Team is always looking for:**

- *stories*
- *photos*
- *info about programs*
- *upcoming events*
- *new developments and more...*



If you have something to contribute to an upcoming issue of Whitney Wire, please contact Susan Lovelock at ext. 4472 or [slovelock@wmyhealth.org](mailto:slovelock@wmyhealth.org) or Jeff Watson at ext. 4471 or [jwatson@wmyhealth.org](mailto:jwatson@wmyhealth.org)